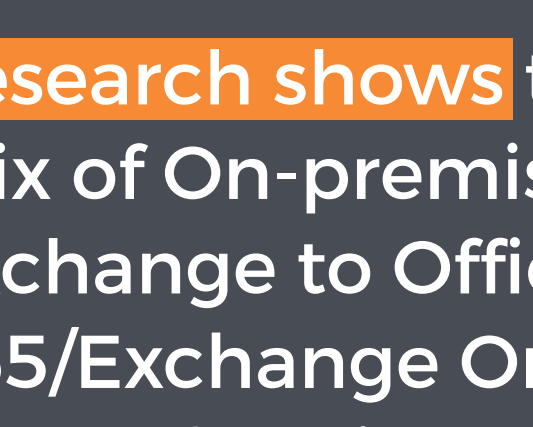




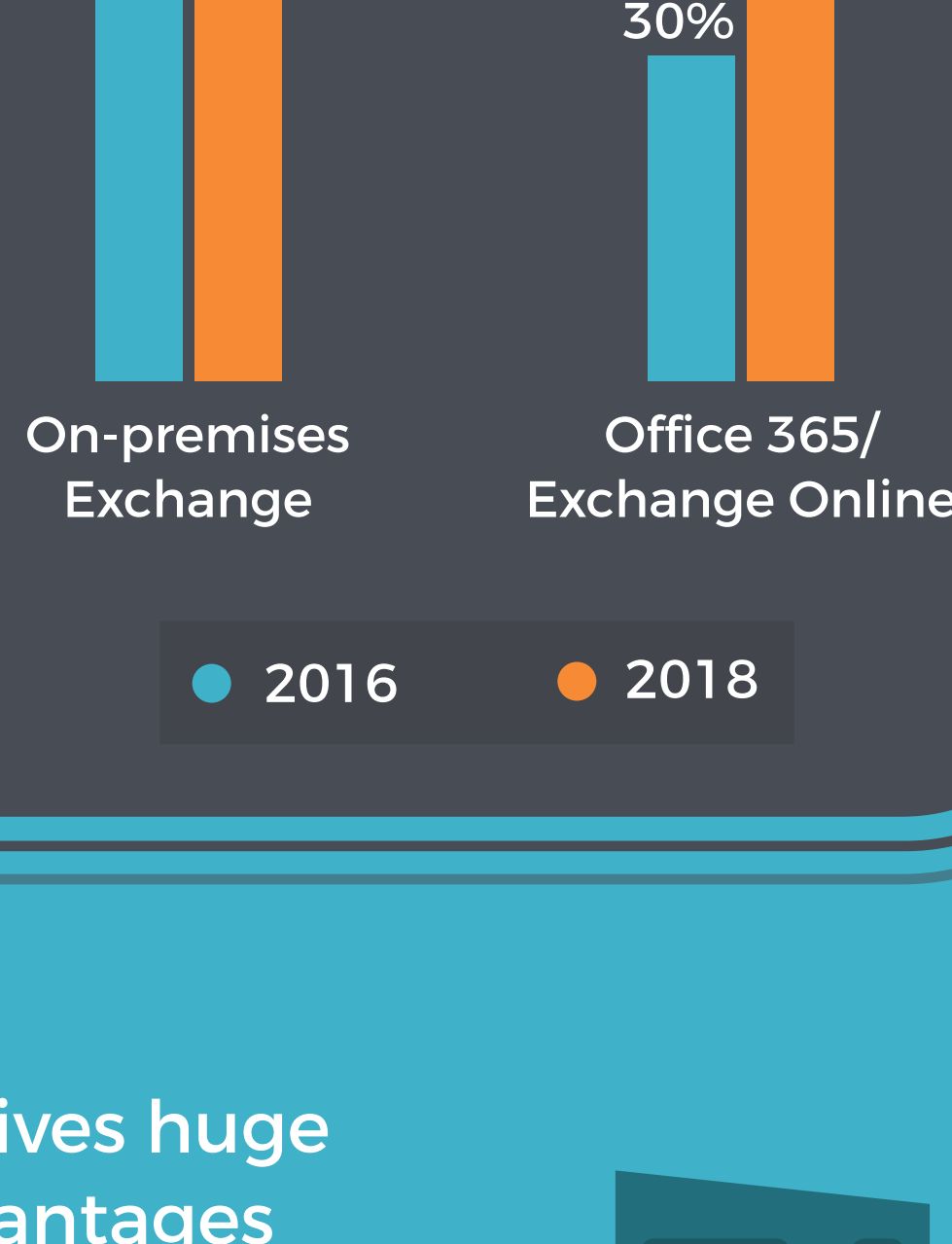
SECURING OFFICE 365

Based on a **white paper** by Osterman Research

Office 365 offers great productivity and economic advantages

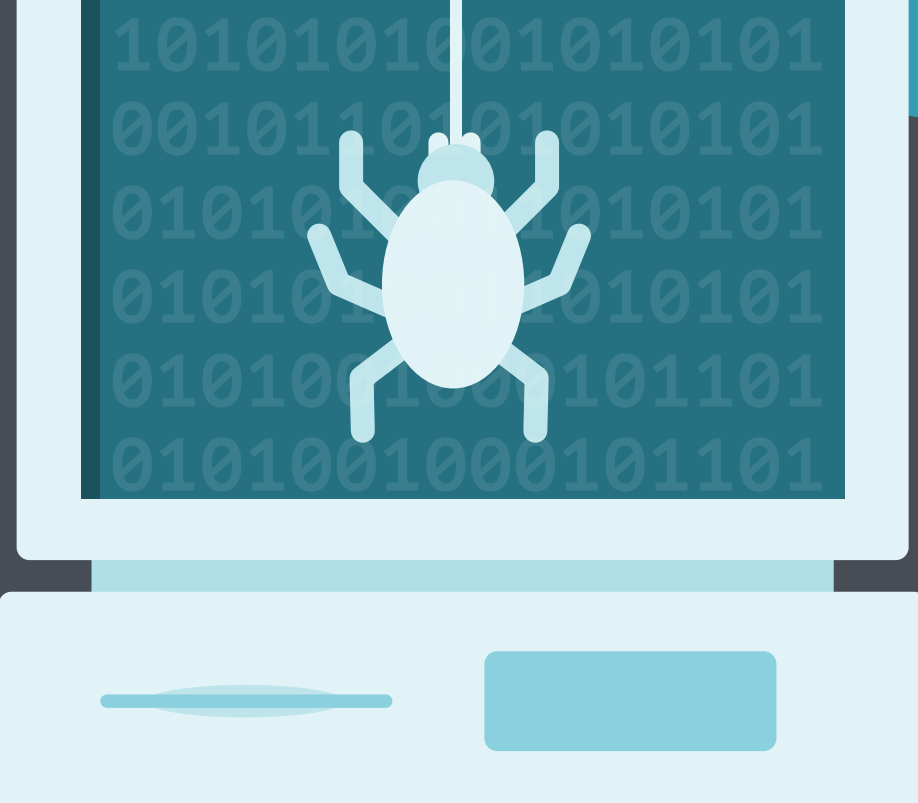
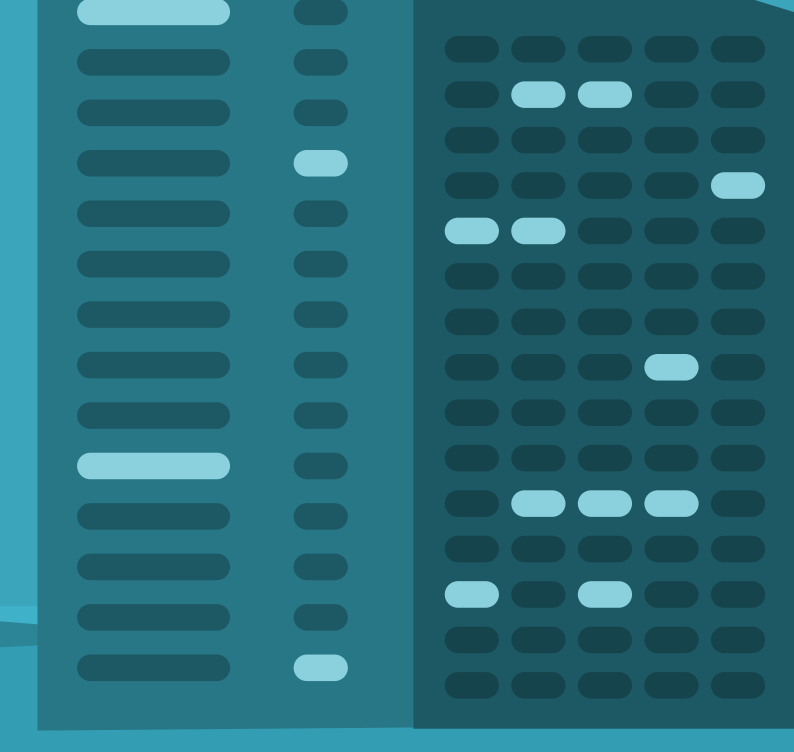


Research shows the mix of On-premises Exchange to Office 365/Exchange Online is transforming¹

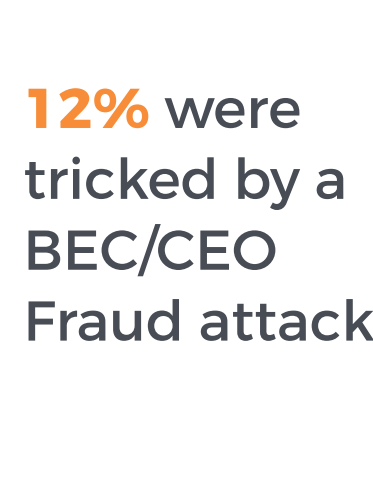


Moving from CAPEX to OPEX gives huge operational and financial advantages

- Cost savings** (Piggy bank icon)
- Always up-to-date** (Alarm clock icon)
- No software/hardware upgrades necessary** (Refresh icon)
- No obsolescence** (Floppy disk icon)
- No depreciation** (Bar chart with downward arrow icon)
- No infrastructure migration** (Network diagram icon)



But cyber threats continue to grow



And moving to Office 365 makes you even more of a target...



Publicly discoverable

Platform easily adopted by **cyber criminals**

Bigger target: 86+ million users as of May 2017

Choose carefully when you make the move

Add a cloud layer as an initial hop

- + threat updates are immediate
- fragmented threat visibility, higher risk, double-paying for SEG

User training

- + moves ownership from IT to users
- proven ineffective; doesn't handle threats that don't require user interaction

Retain a secure email gateway using a hybrid approach

- + security is maintained on-site
- doesn't handle remote or traveling workers & causes IT complexity

Purchase Advanced Threat Protection from Microsoft

- + better protection than Exchange Online Protection (EOP)
- expensive, doesn't handle BEC or targeted zero-day attacks

Fill the identity detection gap

- + stops BEC and targeted phishing attacks; less expensive than Advanced Threat Protection (ATP)
- incremental cost over Office 365

Microsoft bundles in only basic security with Office 365

70% of respondents said they need additional products or services



95% of breaches start with email⁴



By 2018, **40%** of Office 365 deployments will rely on third-party security and compliance tools, up from **15%** in 2016³



Office 365 has no solution for advanced threats based on social engineering



Agari + Office 365 is the solution



Best defense against **email-based attacks**

Catches attacks based on **identity deception** (BEC, ransomware, spear phishing)

Comparable or lower in price than competing choices

For more, read the full Osterman Research white paper [here](#)

Sources:

1. Except where otherwise noted, all data is from Osterman Research white paper linked here
 2. InfoSecurity Magazine, June 13, 2017, <https://www.infosecurity-magazine.com/news/76-of-ransomware-attacks-strike/>
 3. Gartner research report ID G00317721.
 4. 2017 Verizon Breach Digest, http://www.verizonenterprise.com/resources/reports/rp_data-breach-digest-2017-perspective-is-reality_xg_en.pdf